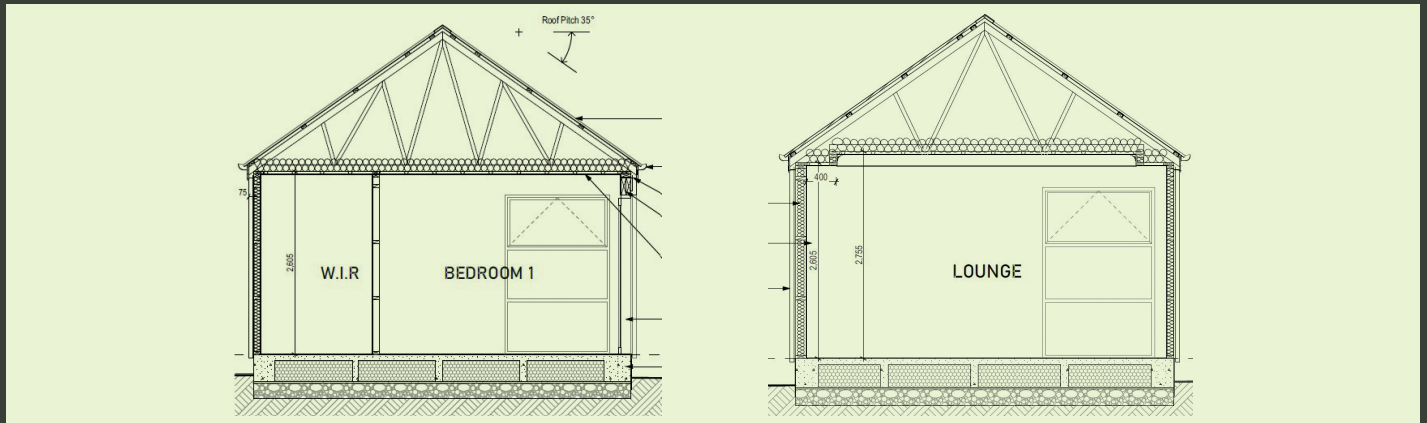




# Internal Ceiling Height & Detail

Greenland Homes includes an over-height 2.55m high ceiling in all our homes (the industry standard is just 2.4m) and this creates an airy, open feel to all spaces.

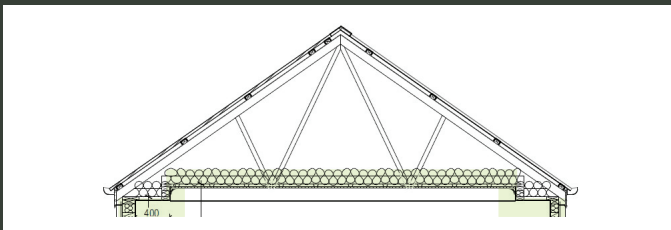
Also included are 2.2m high internal doors including wardrobes and stores (standard is 2m). A very real benefit of the higher stud height is that all exterior windows and doors are also higher than normal, so allow for more light and sun to enter the home which again contributes to the spacious feel.



Plans will generally show a flat ceiling with some exceptions such as a boxed, scissor truss, raking mono or a cathedral ceiling noted as a feature. What are these?

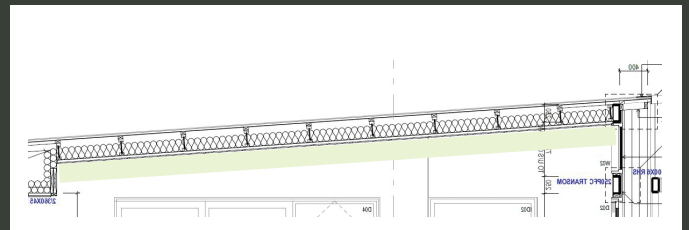
## Boxed Ceiling

Boxed Ceiling steps up in the middle by an average extra 150mm



## Raking (mono) Ceiling

Raking (mono) Ceiling slopes up in one direction

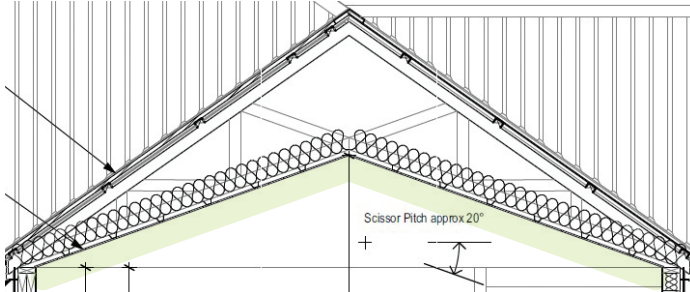


Greenland  
Homes

0800 123 678  
greenlandhomes.co.nz

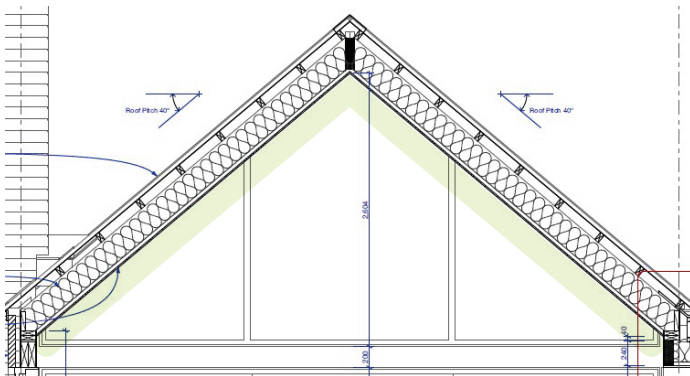
## Scissor Truss Ceiling

Scissor Truss Ceiling is raised in the middle with a gentle slope around  $13^\circ$  to  $20^\circ$  depending on the external roof pitch



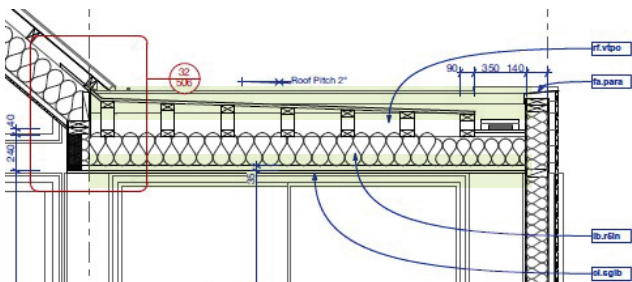
## Cathedral/Vaulted Ceiling

Cathedral/Vaulted Ceiling follows the exterior roof pitch so is much higher at around  $30^\circ$  to  $40^\circ$



## Flat External Roofline

Flat External Roofline is sometimes required to avoid recession planes or connect rooms between pavillion type shapes



## Attic Storage Truss

Attic Storage Truss creates an open space within a standard roof, usually above a garage

